

# ANSWER SCHEME



## INDIAN SCHOOL MUSCAT MIDDLE SECTION FINAL EXAMINATION 2017-18 SCIENCE



MXSC06/07

CLASS: VI

Time Allotted: 2 ½ Hrs.

04.03.2018

Max .Marks: 80

Name

Roll Number

### SECTION A

#### 1.Fill in the blanks

- a. A .....**SHADOW**..... is a dark outline of an opaque that blocks light coming from a source. 1
- b. Light travels in a .....**STRAIGHT**..... line. 1
- c. Deficiency of .....**VITAMIN D**..... causes a disease known as rickets. 1
- d. The **BRISTLE /SETAE** Present under the body of the earth worm gives it a good grip to move. 1
- e. A device used to break an electric circuit is called .....**SWITCH**..... 1
- f. The process of removing seeds from cotton is called ...**GINNING**..... 1

#### 2. Choose the correct answer

- a. Which of the following is an example of translucent objects?**BUTTER PAPER** 1  
i. thin iron sheet ii. cardboard iii. butter paper iv. spectacle lens
- b. Carbohydrates can be tested by using **IODINE** 1  
i. iodine ii. caustic soda iii. copper sulphate iv. nitric acid
- c. Which one of the following is a synthetic fibre? **NYLON** 1  
i. Nylon ii. Cotton iii. jute iv. Silk
- d. Butter is separated from milk by **CHURNING** 1  
i. i.sedimentation ii. Filtration iii. churning iv. None of these
- e. Which is an aquatic adaptation?**STREAM LINE BODY** 1  
stream line body ii. heavy bones iii. hair on body iv. None of these
- f. What is the SI unit of length? **METRE** 1  
i. i. metre ii. centimeter iii. kilometer iv. Millimeter

#### 3. State TRUE or FALSE

- a. Image formed by a pinhole camera is inverted.**TRUE** 1
- b. Anaemia is caused due to the deficiency of calcium.**FALSE** 1
- c. A mixture of milk and water can be separated by filtration.**FALSE** 1
- d. Snakes have a long back bone. **TRUE** 1
- e. The bulb glows only when current flows through the circuit.**TRUE** 1
- f. The motion of hands of a clock is an example of rectilinear motion.**FALSE** 1

#### 4. Give ONE word/term for the following

- |    |   |                                   |   |
|----|---|-----------------------------------|---|
| a. | The objects which allow all light to pass through it.                     | <b>TRANSPARENT</b>                | 1 |
| b. | The nutrients that are needed for the growth and maintenance of our body. | <b>PROTEIN</b>                    | 1 |
| c. | The fruits of a cotton plant.   | <b>COTTON BOLL.</b>               | 1 |
| d. | A solution that cannot dissolve more of the substance in it.              | <b>SATURATED SOLUTION</b>         | 1 |
| e. | The joint where our neck joins the head.                                  | <b>PIVOT JOINT</b>                | 1 |
| f. | A substance which allows electricity to pass through it.                  | <b>CONDUCTORS</b>                 | 1 |
| g. | A measuring device used to measure a piece of cloth.                      | <b>MEASURING TAPE/METRE SCALE</b> | 1 |

#### SECTION B

#### Questions 5 to 19 carry 1 mark each

- |    |   |   |
|----|---|---|
| 5  | Light travels in straight line.   | 1 |
| 6  | (i) Ball and socket joint ( $1/2$ )<br>(ii) Hinge Joint. ( $1/2$ )  | 1 |
| 7  | It results in the loss of some vitamins/nutrients.  | 1 |
| 8  | Doctor must have observed a swelling and taken <b>an x-ray</b> of the ankle-rays confirm the fracture/injury of a bone.   | 1 |
| 9  | fibers obtained from plants and animals   | 1 |
| 10 | Density difference/lighter particles are carried by wind and heavier particles are left behind.   | 1 |
| 11 | A person with wet hands touching on electrical appliances will get shock as impure water conducts electricity.  | 1 |
| 12 | Charkha and takli(hand spindle)( $1/2$ mark each)   | 1 |
| 13 | Evaporation and condensation( $1/2$ each)   | 1 |
| 14 | (i) rotational/circular( $1/2$ )<br>(ii) periodic motion( $1/2$ )   | 1 |
| 15 | Sunlight is stimulus( $1/2$ ) shutting the eyes is response( $1/2$ )  | 1 |
| 16 | Process in which fabrics are produced by set of connected loops from a series of yarn is knitting.<br>The processes in which fabrics are produced by interlacing two threads are called weaving.<br>One set of yarn is used in knitting while two sets of yarn is required in weaving<br><b>(any one)</b>                           | 1 |
| 17 | Height of the tree= 365 cm<br>1m =100 cm<br>365 cm = $365/100$ m = <b>3.65m</b><br>1cm=10 mm<br>365cm= <b>3650 mm.</b>  | 1 |
| 18 | The small adjustments by the body to overcome small changes in the surrounding atmosphere for a <b>short period of time</b> are called acclimatization. While in adaptation, it <b>takes thousands of years</b> for a living being to adapt to its habitat.<br>Acclimatization is a temporary process while adaptation is permanent | 1 |

Acclimatization is not transferred to generations but adaptation does. **(any one)**

- 19 Electric cell produces electricity from chemicals stored inside( $\frac{1}{2}$ ) when chemicals are used up the electric cell stops working ( $\frac{1}{2}$ ) 1

**Questions 20 to 29 carry 2 marks each**

- 20 To the sample of milk, add two drops of copper sulphate ( $\frac{1}{2}$ ) and 10 drops of caustic soda solution( $\frac{1}{2}$ ) a violet colour (1 mark) indicates presence of proteins. 2

- 21 Any **two** 2
- Images are inverted
  - Small in size than object
  - Shows all details /colours of the object

- 22 (i) 2
- stream lined shape to move in water easily
  - strong muscles covering the skeleton which helps to swing its body
  - Fins and tails to change the direction and balancing the body
  - Slippery scale to protect them from rotting (any two--- $\frac{1}{2}$  each)

(ii)Muscles can only pull not push.(1 mark)

- 23 Jute is obtained from the stem of the jute plant ( $\frac{1}{2}$ ). The jute plant is harvested when it is at flowering stage( $\frac{1}{2}$ ).The harvested stem is immersed in water for a few days( $\frac{1}{2}$ ).fibers are separated by hand( $\frac{1}{2}$ ) 2

- 24
- Strong teeth for chewing hard plant stems of forest
  - Long ears to hear movements of predators
  - Eyes on the side of its head allow it to look in all directions
  - Can Run faster
- 25 Motion that repeats itself after some period of time(1 mark) 2

Egs: motion of a pendulum, motion of hands of a clock, rotation /revolution of earth,(any two relevant examples)( $\frac{1}{2}$  mark each)

- 26 (i) 2
- Burrow deep inside the soil
  - Comes out during night time
- (ii)
- The organ through which blue whales or dolphins breathe when they are near to the surface of sea.

- 27 (i)Chemicals in the electric cell get used up very fast and cell stops working 2
- (ii)electric circuit breaks/becomes open circuit

- 28 (i) rib cage-12 pairs ( $\frac{1}{2}$  +  $\frac{1}{2}$ ) 2
- (ii) protects internal organs like heart and lungs

- 29 (i)Length of the pencil=Final reading-initial reading 2
- Final reading=5 cm

Initial reading=1cm  
 Length of pencil=5-1  
 =4 cm.

(ii) Hand span is not a standard unit and vary from person to person

**Questions 30 to 34 carry 3 marks each**

30 i) Goiter(1) Deficiency of iodine(1) 3

(ii) washing vegetables after cutting or peeling/over cooking/repeated washing of rice and pulses/excess water thrown after cooking rice and pulses contain nutrients (anyone-1 mark)

31 (i) 3

1. Mix salt and sand in water-salt dissolves
2. Filter the mixture /sedimentation and decantation-sand is removed(1/2)
3. Evaporation followed by condensation/distillation (salt and water is separated)(1/2)

(ii) Filtration (1/2), Insoluble substances(1/2)

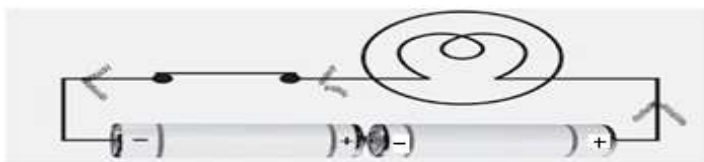
(iii) by heating the solution /powdered form/stirring(any one 1 mark)

32 (i) A---Hinge joint B---ball and socket joint (1/2+1/2) 3

- Hinge joint allows movement only in one direction ,ball and socket joint allows movement in maximum direction (1 mark)

(ii) cartilages(1/2),skull(1/2)

33. i) Positive end of one cell is in contact with positive end of other cell. 3



34 (i) Circular motion(rotational motion) and rectilinear motion(translational)(1/2X2) 3

(ii) both bicycle and wheel of sewing machine possess rotational motion(1 mark)

Bicycle is having rectilinear motion too but wheel of sewing machine does not.(1 mark)

**Questions 35 carries 5 marks**

35 5

(i) A---mountains/polar region/hilly areas(1/2) B---desert(1/2)

(ii) A-cone shaped having sloping branches for the snow to slide off easily

Leaves are needle shaped-to slide off rain/reduce water loss/reduce transpiration (1 mark)

B-have long legs to keep their bodies away from the heat of sand

Excrete small amount of urine/dungs are dry/do not sweat(1 mark)

(iii) leaves are absent or reduced –prevents loss of water through transpiration

Stem is covered with thick waxy layer to retain water.

Roots go very deep into soil for absorbing water.(2 marks)